

# EGATUBE® CONDUIT

## RANGE INTRODUCTION

Egatube high impact PVCu conduit offers a cost effective solution for both new building and refurbishment contracts.

The wide range of fittings and ancillary products means that almost any installation can be specified with confidence.

- Wide range of sections and sizes
- Oval, round and corrugated sections are compatible
- Simple and fast installation
- Very wide range of components maximises versatility of application
- Very durable and impact resistant
- 2 grades of round conduit to suit various site conditions
- All extrusions manufactured from 100% recycled material\*

\*Based on 2014 consumption

### HOW TO SPECIFY

A range of conduit manufactured from recycled PVCu and available in 16mm to 50mm sizes and available in oval, round and corrugated configurations. All products designed and manufactured to comply to BSEN 61386. A wide range of accessories provide maximum versatility of installation.

### Normal Bends

HEAVY GAUGE  
 FITTED WITH TWO  
 COUPLINGS  
 BLK OR WHI

Where there is a choice of colour state the appropriate suffix with the list number when ordering e.g. HIP2BLK  
 For 16mm sizes use 20mm fittings with reducers.  
 (Ref. ER1).



16mm		
20mm	<b>ENB2</b>	<b>25</b>
25mm	<b>ENB3</b>	<b>10</b>
32mm		
38mm		
50mm		



Technical Hotline  
+44 (0)1268 563720

# Egatube® Conduit

## Egatube Round Conduit

Manufactured in accordance with:

BS EN 61386-1

BS EN 61386-21

Standard length:

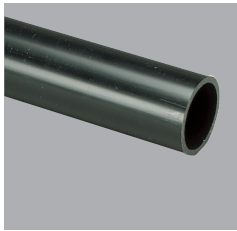
3 metres

Material:

PVCu

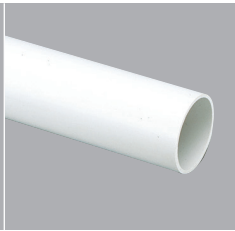
### High Impact Conduit Heavy Gauge

3 METRE LENGTHS  
BLK OR WHI



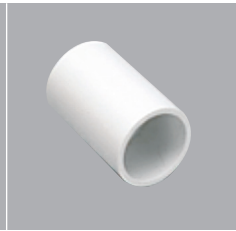
### High Impact Conduit Light Gauge

3 METRE LENGTHS  
WHI ONLY



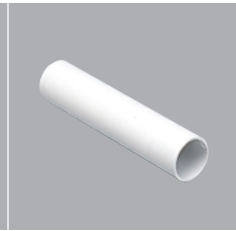
### Heavy Gauge Coupling

BLK OR WHI



### Expansion Coupling

BLK OR WHI



16mm	<b>HIP1</b>	<b>90m</b>	<b>HLG1WHI</b>	<b>90m</b>	<b>ESC1</b>	<b>50</b>	<b>EEC1BLK ONLY</b>	<b>25</b>
20mm	<b>HIP2</b>	<b>90m</b>	<b>HLG2WHI</b>	<b>90m</b>	<b>ESC2</b>	<b>100</b>	<b>EEC2</b>	<b>100</b>
25mm	<b>HIP3</b>	<b>90m</b>	<b>HLG3WHI</b>	<b>90m</b>	<b>ESC3</b>	<b>50</b>	<b>EEC3</b>	<b>50</b>
32mm	<b>HIP4</b>	<b>30m</b>	<b>HLG4WHI</b>	<b>30m</b>	<b>ESC4</b>	<b>50</b>	<b>EEC4</b>	<b>10</b>
38mm	<b>HIP5BLK</b>	<b>30m</b>	<b>HLG5WHI</b>	<b>30m</b>	<b>ESC5</b>	<b>25</b>	<b>EEC5</b>	<b>10</b>
50mm	<b>HIP6BLK</b>	<b>30m</b>	<b>HLG6WHI</b>	<b>30m</b>	<b>ESC6</b>	<b>20</b>	<b>EEC6</b>	<b>10</b>

WALL THICKNESS: (nominal mm):

HIP1 1.7  
HIP2 1.8  
HIP3 1.9  
HIP4 2.5  
HIP5 2.5  
HIP6 3.2

WALL THICKNESS: (nominal mm):

HLG1 1.1  
HLG2 1.2  
HLG3 1.5  
HLG4 1.5  
HLG5 1.5  
HLG6 1.8

### Spacer Bar Saddle

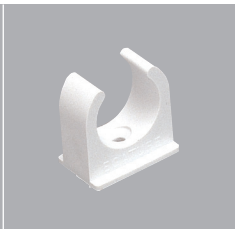
LIGHT GAUGE  
COUPLINGS NOT  
REQUIRED  
WHI ONLY

BLK OR WHI



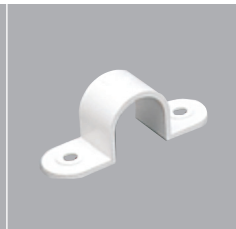
### Spring Clip Saddle

BLK OR WHI



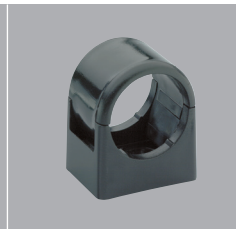
### Strap Saddle

BLK OR WHI



### Quickfit Spacer Saddle

BLK OR WHI



### Conduit Clip

BLK OR WHI



<b>LNB1WHI</b>	<b>25</b>	<b>ESB1</b>	<b>50</b>				
<b>LNB2WHI</b>	<b>100</b>	<b>ESB2</b>	<b>100</b>	<b>MEC2</b>	<b>100</b>	<b>ES2</b>	<b>100</b>
<b>LNB3WHI</b>	<b>50</b>	<b>ESB3</b>	<b>100</b>	<b>MEC3</b>	<b>50</b>	<b>ES3</b>	<b>100</b>
<b>LNB4WHI</b>	<b>50</b>	<b>ESB4</b>	<b>50</b>	<b>MEC4WHI</b>	<b>25</b>		
<b>LNB5WHI</b>	<b>25</b>	<b>ESB5</b>	<b>25</b>				
<b>LNB6WHI</b>	<b>25</b>	<b>ESB6</b>	<b>25</b>				

# Egatube® Conduit

## Inspection Elbow

BLK OR WHI



## Quick Fit Inspection Elbow

BLK OR WHI



## Inspection Tee

BLK OR WHI



## Quick Fit Tee

BLK OR WHI



## Inspection Bend

BLK OR WHI



20mm	<b>EIE2</b>	<b>25</b>	<b>EQE2</b>	<b>25</b>	<b>EIT2</b>	<b>25</b>	<b>EQT2</b>	<b>25</b>	<b>EIB2</b>	<b>25</b>
25mm					<b>EIT3</b>	<b>25</b>	<b>EQT3</b>	<b>25</b>	<b>EIB3</b>	<b>25</b>
32mm										
38mm										
50mm										

## Compression Gland

\*BLK OR WHI



## Adaptor Male Thread

WITH LOCK RING  
BLK OR WHI



## Adaptor Female Thread

WITH MALE BUSH  
BLK OR WHI



## Clip-in Adaptor

WHI ONLY



## Bell Mouth Bush

WHI ONLY



20mm	<b>ECG2*</b> 7-10.5	<b>100</b>	<b>EMA2</b>	<b>100</b>	<b>EFA2</b>	<b>100</b>	<b>CEA2WHI</b>	<b>50</b>	<b>BMB2WHI</b>	<b>50</b>
25mm	<b>ECG3BLK</b> 8-13	<b>50</b>	<b>EMA3</b>	<b>50</b>	<b>EFA3</b>	<b>50</b>				
32mm			<b>EMA4</b>	<b>25</b>	<b>EFA4</b>	<b>25</b>				
38mm			<b>EMA5</b>	<b>25</b>	<b>EFA5</b>	<b>25</b>				
50mm			<b>EMA6</b>	<b>10</b>	<b>EFA6</b>	<b>10</b>				



Technical Hotline  
+44 (0)1268 563720

# Egatube® Conduit

## Quick Fit Inspection Bend

BLK OR WHI



## Plug Plain

BLK OR WHI



## Plug Screwed

BLK OR WHI



## Locknut

GRY ONLY



## Lockring

BLK OR WHI



## Reducer

BLK OR WHI



EQB2	25	EP2	100	EP2S	100	EHL2GRY	100	ECL2	100	ER1 20 x 16	50
EQB3	25	EP3	100	EP3S	100	EHL3GRY	100	ECL3	100	ER2 25 x 20	50
								ECL4	50		
								ECL5	25	ER5WH 38 x 32	10
								ECL6	25		

## Male Bush Plain

BLK OR WHI



## Male Bush Screwed

BLK ONLY



## Female Bush Screwed

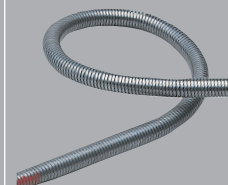
BLK ONLY



## Bending Springs

GREEN  
HEAVY GAUGE  
FOR HIP AND ESP

RED  
LIGHT GAUGE  
FOR HLG



MPB2	100	SMB2BLK	50	EBF2BLK	100	ESS2	1	ELS2	1
MPB3	100	SMB3BLK	50	EBF3BLK	100	ESS3	1	ELS3	1
		SMB4BLK	50						
		SMB5BLK	25						
		SMB6BLK	25						

# Egatube<sup>®</sup> Boxes

## Circular Boxes

BLK OR WHI



2ECR1



ECR12EL

## Terminal Boxes

BLK OR WHI



2ECR2



2ECR7

## Through Boxes

BLK OR WHI



2ECR3



2ECR8

## Branch Boxes

BLK OR WHI



2ECR17



2ECR18

**2ECR13**  
20mm LOOP-IN  
**2ECR1**  
**2ECR1ELWHI\***  
20mm BACK OUTLET  
**ECR12**  
**ECR12EL\***  
NO SPOUT

**20** **2ECR2**  
20mm ONE WAY  
**20** **3ECR2**  
25mm ONE WAY  
**20** **2ECR7**  
20mm ONE WAY AND  
BACK OUTLET

**20** **2ECR3**  
20mm TWO WAY  
**10** **3ECR3**  
25mm TWO WAY  
**20** **2ECR8**  
20mm TWO WAY AND  
BACK OUTLET

**20** **2ECR17**  
20mm 'U' TWO WAY  
**10** **2ECR18**  
20mm 'Y' THREE WAY  
**20**

\* Fixed external lugs.  
20mm Loop-in boxes have 4 x 20mm knockouts  
on underside.

**MATERIAL:**  
PVCu  
**LID FIXING CENTRES:**  
50.8mm  
**PILLAR THREAD SIZE:**  
M4 (Brass inserts)  
All boxes contain a moulded recess for  
earth terminal.

**ALL CIRCULAR BOXES**  
For 16mm sizes use 20mm fittings with reducers. (Ref. ER/1)  
Some circular boxes are available with extended lugs for the support of heavy loads.

**LOAD SUSPENSION**  
**Standard Circular Box:** 3kg. @ 60°C max.  
**Extended Lug Box:** 10kg. @ 60°C max.  
For enclosed lighting fittings see 'Heat Resistant Box' on page 356 or use 'Steel Insert Clips' on page 357.



Technical Hotline  
+44 (0)1268 563720

# Egatube® Boxes

## Angle Boxes

BLK OR WHI



2ECR4

## Tee Boxes

BLK OR WHI



3ECR5

## Intersection Boxes

BLK OR WHI



3ECR6

## Tangent Boxes

BLK OR WHI



3ECR14



3ECR15

**2ECR4**  
20mm TWO WAY  
**3ECR4**  
25mm TWO WAY

**20** **2ECR5**  
**2ECR5EL\***  
20mm THREE WAY  
**10** **3ECR5**  
25mm THREE WAY

\* Swivel lug.

**20** **2ECR6**  
**20** **2ECR6EL\***  
20mm FOUR WAY  
**10** **3ECR6**  
25mm FOUR WAY

\* Swivel lug.

**20** **2ECR14**  
20mm ANGLE  
**20** **3ECR14**  
25mm ANGLE  
**10** **2ECR15**  
20mm TEE  
**10** **3ECR15**  
25mm TEE

**MATERIAL:**  
PVCu  
**LID FIXING CENTRES:**  
50.8mm  
**PILLAR THREAD SIZE:**  
M4 (Brass inserts)  
All boxes contain a moulded recess for earth terminal.

**ALL CIRCULAR BOXES**  
For 16mm sizes use 20mm fittings with reducers. (Ref. ER/1)  
Some circular boxes are available with extended lugs for the support of heavy loads.

**LOAD SUSPENSION**  
**Standard Circular Box:** 3kg. @ 60°C max.  
**Extended Lug Box:** 10kg. @ 60°C max.  
For enclosed lighting fittings see 'Heat Resistant Box' on page 356 or use 'Steel Insert Clips' on page 357.



## Adaptable Boxes

BLK OR WHI



MAB1



MAB2



MAB3

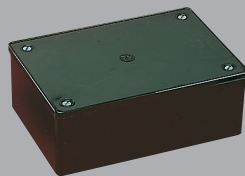
BLK OR WHI



MAB4



MAB5



MAB6

## Heat-Resistant Boxes

BLK ONLY



2ECR25

## Earth Electrode Box

BLK ONLY



EEB1

## Circular Lids Gaskets and Screws

BLK OR WHI



EL1



EL2



EL3

**MAB1**  
EXTERNAL SIZE  
75 x 75 x 41mm

5

**MAB2**  
EXTERNAL SIZE  
75 x 75 x 53mm

5

**MAB3**  
INTERNAL SIZE  
100 x 100 x 50mm

5

**MAB4**  
INTERNAL SIZE  
100 x 100 x 75mm

5

Available in Black or White.  
When ordering use colour suffix BLK or WHI.

**MATERIAL:**

PVCu

**NOTE:**

Boxes are not IP Rated.

**MAB5**  
INTERNAL SIZE  
150 x 75 x 50mm

5

**MAB6**  
INTERNAL SIZE  
150 x 100 x 50mm

5

**MAB7**  
INTERNAL SIZE  
150 x 150 x 75mm

5

**2ECR25BLK**  
20MM FLAT BASED WITH  
20MM CUT-OUTS FOR  
CONDUIT ENTRY

5

Available in Black only.

**MATERIAL:**  
Noryl/PVCu

**LID FIXING CENTRES:**  
50.8mm

**PILLAR THREAD SIZE:**  
M4 (metal inserts)

**LOAD SUSPENSION:**  
10kg. @ 100°C max.

All Heat Resistant Boxes include keying facility.

**10 EEB1BLK**  
75 x 75 x 70mm

10

Available in Black only.

**MATERIAL:**

PVCu

The Egatube Earth Electrode Box is to protect the connection to an earth electrode.

**5 EL1**  
LIDS 66mm DIA

5

**EL2**  
OVERLAPPING LIDS  
85mm DIA

50

**EL3**  
RUBBER GASKETS  
66mm DIA

50

**M4X10SS**  
SCREWS FOR CIRCULAR  
BOXES

50

**EL1/EL2**  
Available in Black or White.  
When ordering use colour suffix BLK or WHI.

**EL3**

Is available in Black only.

**MATERIAL:**

EL/1 and EL/2: PVCu

EL/3: Rubber

**LID FIXING CENTRES:**  
50.8mm



Technical Hotline  
+44 (0)1268 563720

# Egatube® Accessories

## Extension Rings

BLK OR WHI



EER3



EER6



EER7

## Pendant Dome Cover

BLK OR WHI



EDC1

## Accessories



SIC



BET1



BET2

## Sundries



EWPLUS



ECT1



DRA10

- EER3** 25  
NOM DEPTH 12.5mm
- EER5** 25  
NOM DEPTH 19mm
- EER6** 25  
NOM DEPTH 25mm
- EER7** 25  
NOM DEPTH 32mm
- EER8** 25  
NOM DEPTH 38mm
- EER9** 25  
NOM DEPTH 50mm

Available in Black or White.  
When ordering use colour suffix BLK or WHI.  
**MATERIAL:**  
PVCu  
**FIXING CENTRES:**  
50.8mm  
To suit circular conduit boxes.  
**EER6-EER9** are fitted with slots to suit Steel Insert Clips.

- EDC1** 25  
PENDANT DOME COVER
- Available in Black or White.  
When ordering use colour suffix BLK or WHI.  
**FIXING CENTRES:**  
50.8mm  
To suit circular conduit boxes. 20mm conduit female thread only.

- SIC** 100  
STEEL INSERT CLIP
- BET1** 50  
BRASS EARTHING TERMINALS  
5 AMP
- BET2** 50  
BRASS EARTHING TERMINALS  
15 AMP

**STEEL INSERT CLIP**  
Fits most Egatube circular boxes through base knock-outs. Provides additional support for heavy pendants. Tapped M4  
**NOTE:**  
Must be fitted before installation of box.  
**BRASS EARTHING TERMINALS**  
Fits standard circular boxes and switch/socket boxes.  
Supplied complete with screws.

- EWPLUS** 1  
EGAWELD PLUS  
0.25 LITRE
- EGAWELD PLUS**  
A specially prepared waterproof vinyl solvent cement for making watertight joints between PVC conduit, trunking and fittings.  
COSSH information is available on the MK website: [www.mkelectric.co.uk](http://www.mkelectric.co.uk)

- ECT1** 1  
EGASNIP CUTTING TOOL
  - DRA10** 1  
NYLON DRAW TAPE  
10M LENGTH
  - DRA20** 1  
NYLON DRAW TAPE  
20M LENGTH
- EGASNIP**  
A cutting tool which enables conduit, up to 32mm in diameter, and mini trunking, up to 40mm x 25mm, to be cut easily and precisely giving a clean finish with no swarf.  
Single handed operation.  
Two types of anvil.  
Accurate mitre capability.  
**NYLON DRAW TAPES**  
An eyelet is fitted.



# Egatube® Accessory Boxes

## Round Corner Accessory Boxes

16mm  
PLASTER DEPTH  
FLUSH



ESU61WHI

25mm  
FLUSH



ESU9MLWHI

35mm  
FLUSH



ESU8MLWHI

25mm  
SURFACE



ESU241WHI

## Square Corner Accessory Boxes

25mm  
SURFACE



ESU261WHI

32mm  
SURFACE



ESU281WHI



ESU92MLWHI



ESU82MLWHI



ESU242WHI



ESU262WHI



ESU282WHI

**ESU61WHI** 25  
1 GANG  
ONE FIXED PILLAR AND  
ONE ADJUSTABLE LUG

**KNOCKOUTS:**  
One 16mm oval and  
one 20mm oval

**MATERIAL:**  
PVCu

**DIMENSIONS:**  
1 gang: 73 x 73mm

**FIXING CENTRES:**  
1 gang: 60.3mm  
BS 4662 and BS 5733  
where applicable.

**ESU9MLWHI** 25  
1 GANG  
ADJUSTABLE LUGS  
**ESU92MLWHI** 10  
2 GANG  
ADJUSTABLE LUGS

**KNOCKOUTS:**  
1 gang: Six 20mm round  
2 gang: Seven 20mm round  
and one 25mm oval

**MATERIAL:**  
PVCu

**DIMENSIONS:**  
1 gang: 73 x 73mm  
2 gang: 73 x 134mm

**FIXING CENTRES:**  
1 gang: 60.3mm  
2 gang: 120.6mm  
BS 4662 and BS 5733  
where applicable.

**ESU81WHI** 25  
1 GANG  
FIXED LUGS  
**ESU8MLWHI** 25  
1 GANG  
ADJUSTABLE LUGS  
**ESU82MLWHI** 10  
2 GANG  
ADJUSTABLE LUGS

**KNOCKOUTS:**  
1 gang: Eight 20mm round  
2 gang: Nine 20mm round and  
one 25mm oval

**MATERIAL:**  
PVCu

**DIMENSIONS:**  
1 gang: 73 x 73mm  
2 gang: 73 x 134mm

**FIXING CENTRES:**  
1 gang: 60.3mm  
2 gang: 120.6mm  
BS 4662 and BS 5733  
where applicable.

**ESU241WHI** 25  
1 GANG  
**ESU242WHI** 10  
2 GANG

**KNOCKOUTS:**  
1 gang:  
One 20mm round and  
one mini trunking entry  
2 gang:  
One 20mm round and  
three mini trunking entries

**MATERIAL:**  
PVCu

**DIMENSIONS:**  
1 gang: 86 x 86mm  
2 gang: 86 x 146mm

**FIXING CENTRES:**  
1 gang: 60.3mm  
2 gang: 120.6mm  
BS 4662 and BS 5733  
where applicable.

**ESU261WHI** 25  
1 GANG  
**ESU262WHI** 10  
2 GANG

**KNOCKOUTS:**  
ESU261: One 20mm round  
ESU262: One 20mm round

**MATERIAL:**  
PVCu

**DIMENSIONS:**  
1 gang: 86 x 86mm  
2 gang: 86 x 146mm

**FIXING CENTRES:**  
1 gang: 60.3mm  
2 gang: 120.6mm  
BS 4662 and BS 5733  
where applicable.

**ESU281WHI** 25  
1 GANG  
**ESU282WHI** 10  
2 GANG

**KNOCKOUTS:**  
1 gang: One 20mm round  
2 gang: One 20mm round and  
one mini trunking entry

**MATERIAL:**  
PVCu

**DIMENSIONS:**  
1 gang: 86 x 86mm  
2 gang: 86 x 146mm

**FIXING CENTRES:**  
1 gang: 60.3mm  
2 gang: 120.6mm  
BS 4662 and BS 5733  
where applicable.

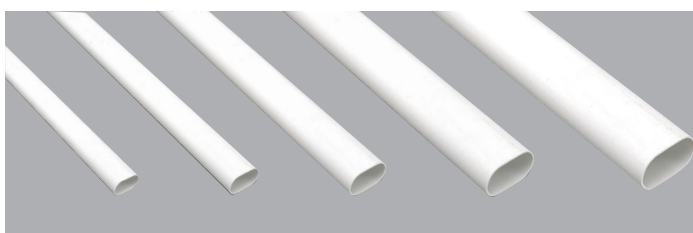


Technical Hotline  
+44 (0)1268 563720

# Egatube® Oval

## Oval Conduit

3 METRE LENGTHS



## Coupling



## Oval to Round Adaptor



### Manufactured in accordance with:

BS 4607 Part 5

Standard length: 3 metres

Material: PVCu

Colour: White

All extrusions manufactured from 100% recycled material.\*

\* Based on 2014 consumption.

13mm x 8mm	<b>EOC1WHI</b>	<b>150m</b>		
16mm x 10mm	<b>EOC2WHI</b>	<b>150m</b>		
22.5mm x 11mm	<b>EOC3WHI</b>	<b>150m</b>	<b>CO3WHI</b>	<b>50</b>
29mm x 11mm	<b>EOC4WHI</b>	<b>150m</b>	<b>CO4WHI</b>	<b>50</b>
29mm x 16mm	<b>EOC5WHI</b>	<b>150m</b>		
23mm x 14mm	<b>EOC6WHI</b>	<b>150m</b>		

## Saddle



## External Spring Clip Oval



16mm	<b>OS2WHI</b>	<b>100</b>	<b>XC2WHI</b>	<b>100</b>
20mm	<b>OS3WHI</b>	<b>100</b>	<b>XC3WHI</b>	<b>100</b>
25mm	<b>OS4WHI</b>	<b>100</b>	<b>XC4WHI</b>	<b>100</b>

## Egaflex

The Egaflex PVCu conduit range is a corrugated pliable system which can be used for the connection of vibrating equipment or to provide tight bends for interconnecting conduits. The range can be surface mounted or cast-in concrete and can also be used with standard conduit fittings.

**Manufactured in accordance with:**

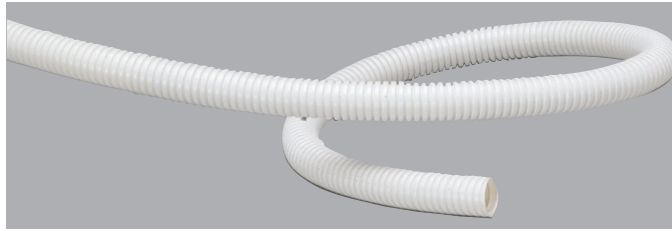
BS EN 61386-1  
BS EN 61386-22

**Material:** PVCu

**Colour:** White

**Standard length:** 50 metres coil

## Corrugated PVCu Conduit



## Adaptor Nylon



16mm	<b>EF1WHI</b>	<b>50m Coil</b>	<b>FAB1WHI</b>	<b>50</b>
20mm	<b>EF2WHI</b>	<b>50m Coil</b>	<b>FAB2WHI</b>	<b>50</b>
25mm	<b>EF3WHI</b>	<b>50m Coil</b>	<b>FAB3WHI</b>	<b>50</b>

## Rectangular Channelling

**2 METRE LENGTHS**



**Wall thickness:** 0.9mm

**Material:** PVCu

**Colour:** White

**Standard length:** 2 metres

Other lengths can be supplied against quantity orders.

All extrusions manufactured from 100% recycled material.\*

\* Based on 2014 consumption.

12mm	(8mm DEPTH APPROX)	<b>REC1WHI</b>	<b>150mm</b>
25mm	(8mm DEPTH APPROX)	<b>REC2WHI</b>	<b>150mm</b>
25mm	(9.5mm DEPTH APPROX)	<b>REC3WHI</b>	<b>150mm</b>